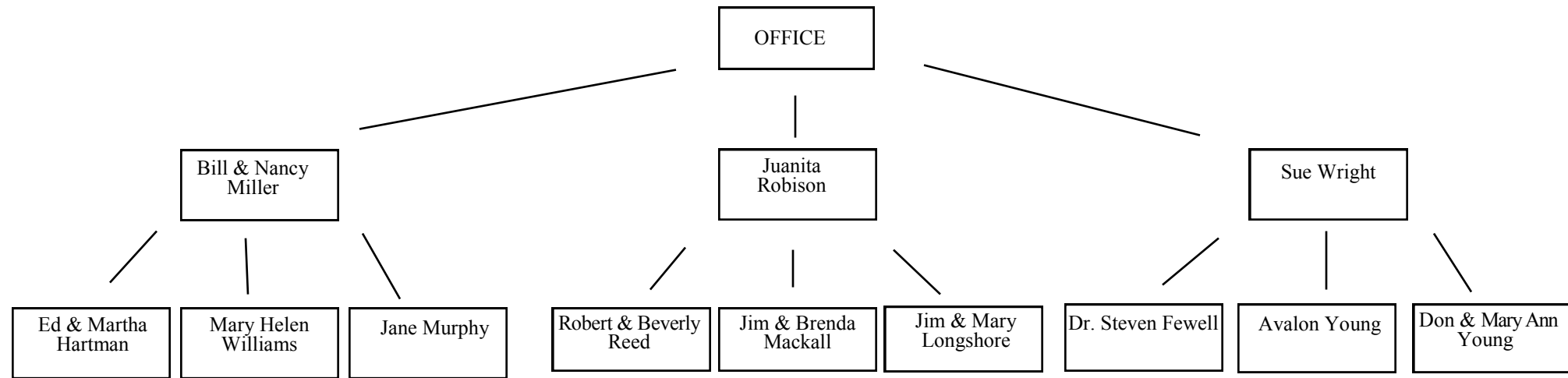


Daytime Prayer Chain



Incoming Prayer Requests

1. Requests may come from any source, anyone in need of prayer.
2. Requests in daytime should begin with the church office during office hours (Monday – Thursday 8:00 – 2:00; Friday 8:00 – 12:00). After office hours and before 6:00 p.m. or on weekends call, one of the three persons listed directly below the office.
3. After 6:00 p.m. use nighttime prayer chain. If Robert & Bev Reed aren't home, call one of the three persons listed directly below their name.
4. Include the amount of information you want passed on.

Directions for Prayer Chain Members

1. Write down requests exactly as they are given (a notebook by the phone is helpful).
2. Immediately call your persons on the chain. If they are not home, call them later.
3. Hang up and pray immediately.
4. Please keep requests confidential.

Nighttime Prayer Chain

